



Search

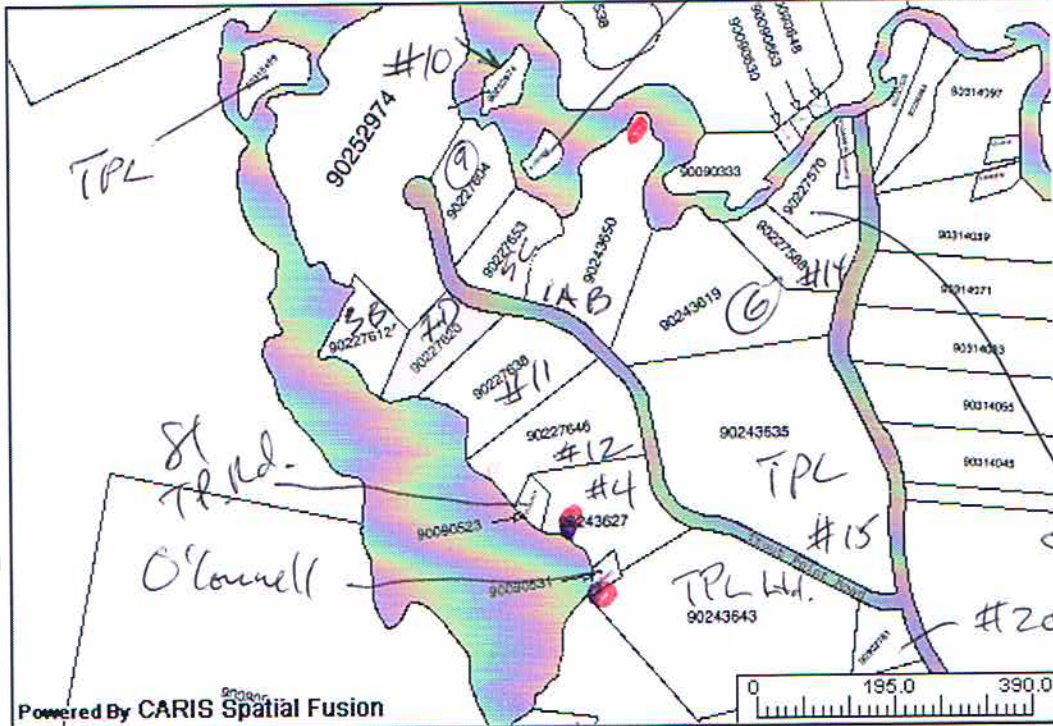
Provincial Map

Bulletin Board

Help

Reserve 2500  
CTV

- ← Back to Search Results
- Map Actions
  - ☐ Point Select
  - ☐ Pan
  - ☐ Zoom In
  - ☐ Zoom Out
  - ☐ Zoom Box
  - ☐ Monument Select
  - ☐ Clear Selection
  - ☐ Center Selection
- Map Layers
  - Properties
  - LR Parcel Shading
  - Topo
  - Monuments
  - Place Names
- Map Controls
  - Refresh Map
  - NS Overview
  - Locator Map
  - Print Map



Lat:  Long:  Scale:  Zoom:

The Provincial mapping is a graphical representation of property boundaries which approximate the size, configuration and location of parcels. Care has been taken to ensure the best possible quality, however, this map is not a land survey and is not intended to be used for legal descriptions or to calculate exact dimensions or area. The Provincial mapping is not conclusive as to the location, boundaries or extent of a parcel [Land Registration Act subsection 21(2)]. THIS IS NOT AN OFFICIAL RECORD.

**Property Online version 2.0**

This page and all contents are copyright © 1999-2003, Government of Nova Scotia, all rights reserved.

If you have comments regarding our site please direct them to: [propertyonline@gov.ns.ca](mailto:propertyonline@gov.ns.ca)

Please feel free to [Submit Problems](#) you find with the Property Online web site.

Compression: Off